

本公司保留不予以事先通知而进行产品改良之权利
Our company reserves the right to make any improvement on product design without advance notice

佛山市
安业医疗器械科技
有限公司

"Da Dang Gang"
Management Office
Muyuan Shishan Town,
Nanhai District,
Foshan City,
Guangdong Province, China

广东省佛山市南海区狮山镇
穆院管理处“大函岗”

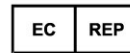
邮编 P.C: 528225

外贸: +(86)757-81006901
国内: +(86)757-81006902
售后: +(86)757-81006904
传真: +(86)757-81006922
外贸邮箱: sales1@anyeyl.cn
sales2@anyeyl.cn

Export department: +(86)757-81006901
Fax: +(86)757-81006922
Export department mail: sales1@anyeyl.cn
sales2@anyeyl.cn

Foshan
ANYE Medical Apparatus
Technology CO.,LTD

中国安业医疗官方网站
Websites: www.anyeyl.cn
http://anye-company.en.made-in-china.com



0598

Lotus Global Co.Ltd

1 Four Seasons Terrace West Drayton, Middlesex London, UB7 9GG United Kingdom

© 安业（佛山）医疗器械科技有限公司，版权所有。

图片仅供参考，以实物为准
All products subject to the practicality, the pictures just for rference



ANYE®
安业医疗



安业·公众号
WeChat



ABOUT ANYE 关于安业

佛山市安业医疗器械科技有限公司是一家通过CE和ISO13485 : 2003认证的生产厂家, 集于研发、生产和销售一体化。

安业以研发最具性能产品与合适价格为目标, 以服务与创造为理念,以诚信第一为原则,以全新的理念打造行业标杆为经营宗旨。专业的技术,专一的生产, 专注的服务,将始终是安业对您真诚及永久的承诺。

佛山安业期待与您的合作!

Foshan ANYE Medical Apparatus Technology CO.LTD is a manufacturer that integrates research, development, production and selling. Our company has passed Quality System Certifications, ISO 9001 and ISO 13485. The products has obtained the CE Certificate.

To discover the most commercial value products and appropriate price as the goal, to create value with services, to run the enterprise under the good faith first principle, to create industry benchmark in new concept as corporate philosophy. Professional technology, specific production, and attentive service will always be our sincere and permanent promise.

Foshan ANYE looks forward to cooperating with you!

ANYE® 安业医疗



全自动激光切割
Laser cutting machine



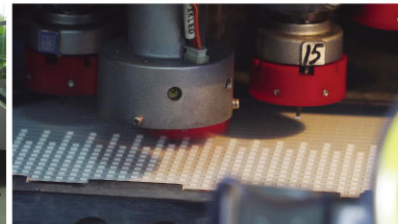
全自动机械手电焊
Full-automatic electrowelding by manipulator



半自动椅架组装
Semi-automatically assemble frame



阀门加工中心
Valve processing center



电路板制造
Circuit board manufacture



ANYE SPIRIT 安业精神

问道创新, 追求卓越
恪奉品质, 匠人精神

Explore Innovation, strive for excellence
adhere to quality, Artisan spirit.



ANYE MISSION 安业宗旨

企业与社会和谐发展
企业与客户和谐共赢
企业与员工和谐进步

Harmonious development with society, all-win
harmony between customers, harmony and
progress for enterprise and staffs.



GOAL 安业目标

自主研发最具
商业价值产品

To R&D the most commercial
value products as the goal.



VISION 安业愿景

安业, 致力于发展百年企业,
做您终身信赖的贴身管家

It is committed to develop century
enterprise and be your lifelong trusted
butler.

COMPANY CERTIFICATE 企业证书



AY-215D2



欢乐童年...
健康成长



海豹
Seal



七星瓢虫
Ladybug



口腔灯
operating light



刺猬
Hedgehog



长颈鹿
Giraffe



孔雀
Peacock



蝎子
Scorpion



海星
Starfish



羚羊
Antelope

出厂配置

- ★ 24V静音直流电机 一套
- ★ 冲痰漱口定量给水自动系统 一套
- ★ 豪华新材料痰盂 (防摔/可拆卸) 一套
- ★ 8孔豪华LED口腔灯(白光/黄光) 一盏
- ★ 三用喷枪 (冷/热) 二支
- ★ 电动牙科椅控制系统 (9个记忆) 一套
- ★ 水气电总开关装置地箱 一套
- ★ 移动式工具盘 一套
- ★ 进口电磁阀 一套
- ★ LED观片灯 一套
- ★ 医生转椅 C型 一张
- ★ 铸铝多功能脚踏开关 一套

STANDARD ACCESSORIES

- ★ 24V noiseless DC motor 1set
- ★ Auto spittoon flush and cup filler control system 1set
- ★ Luxury spittoon(detachable) 1set
- ★ 8 holesLuxury LED light(White light/yellow light) 1set
- ★ 3-way syringe(Cold/hot water) 2set
- ★ Luxury motor chair control system with nine memory 1set
- ★ Floor box with main switch(Air/Water) 1set
- ★ Removable instrument tray 1set
- ★ Imported electromagnetism valve 1set
- ★ LED x-ray film viewer 1set
- ★ Dentist stool C 1set
- ★ Cast aluminum multi-function foot switch 1set

技术参数

- ★ 电源电压 220V-50HZ/60HZ
- ★ 电机电压 24V
- ★ 气源气压 0.5MPa-0.8MPa
- ★ 水源水压 0.2MPa-0.4MPa

SPECIFICATIONS

- ★ Power Voltage 220V-50HZ/60HZ
- ★ Motor Voltage 24V
- ★ Air Pressure 0.5MPa-0.8MPa
- ★ Water Pressure 0.2MPa-0.4MPa

AY-215D3



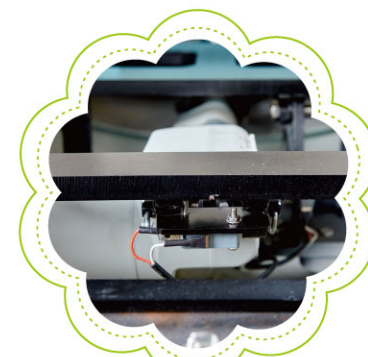
欢乐童年...
健康成长



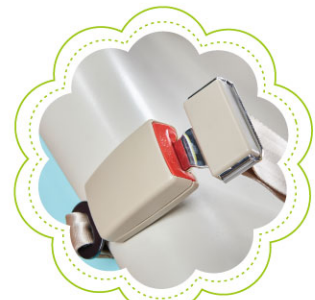
按键板
Keyboard



口腔灯
operating light



靠背安全锁
Backrest safety lock



束缚带
restraint belt



痰盂
Spitton



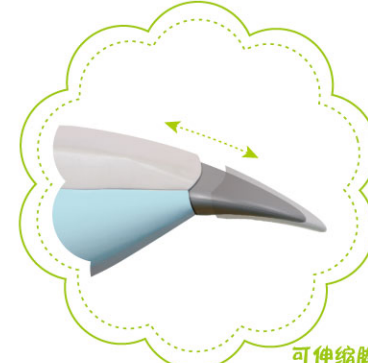
多功能脚踏
Multifunctional foot control



急停开关
Emergency stop switch



转换开关
Transfer switch



可伸缩脚垫
retractable feet

出厂配置

- ★ 24V静音直流电机 一套
- ★ 冲痰漱口定量给水自动系统 一套
- ★ 豪华新型材料痰盂 (防摔/可拆卸) 一套
- ★ 豪华LED口腔灯(白光/黄光) 一盏
- ★ 三用喷枪 (冷/热) 二支
- ★ 电动牙科椅控制系统 (3个记忆) 一套
- ★ 水气电总开关装置地箱 一套
- ★ 移动式工具盘 一套
- ★ 进口电磁阀 一套
- ★ LED观片灯 一套
- ★ 医生转椅 C型 一张
- ★ 铸铝多功能脚踏开关 一套

STANDARD ACCESSORIES

- ★ 24V noiseless DC motor 1set
- ★ Auto spittoon flush and cup filler control system 1set
- ★ Luxury spittoon(detachable) 1set
- ★ Luxury LED light(White light/yellow light) 1set
- ★ 3-way syringe(Cold/hot water) 2set
- ★ Luxury motor chair control system with three memory 1set
- ★ Floor box with main switch(Air/Water) 1set
- ★ Removable instrument tray 1set
- ★ Imported electromagnetism valve 1set
- ★ LED x-ray film viewer 1set
- ★ Dentist stool C 1set
- ★ Cast aluminum multi-function foot switch 1set

技术参数

- ★ 电源电压 220V-50HZ/60HZ
- ★ 电机电压 24V
- ★ 气源气压 0.5MPa-0.8MPa
- ★ 水源水压 0.2MPa-0.4MPa

SPECIFICATIONS

- ★ Power Voltage 220V-50HZ/60HZ
- ★ Motor Voltage 24V
- ★ Air Pressure 0.5MPa-0.8MPa
- ★ Water Pressure 0.2MPa-0.4MPa



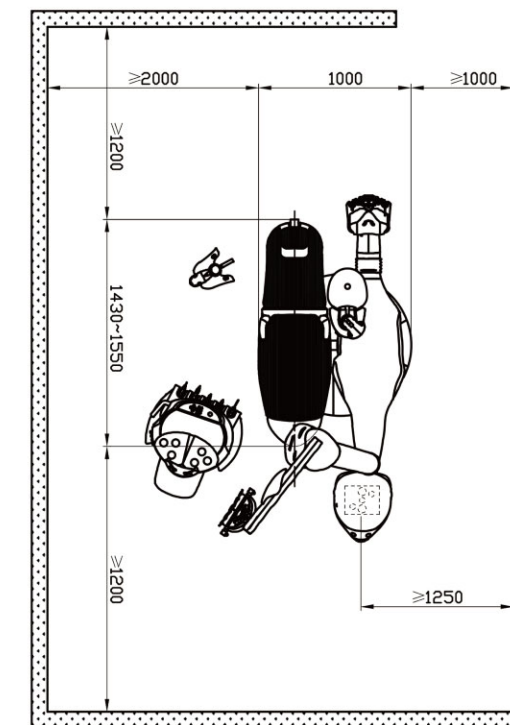
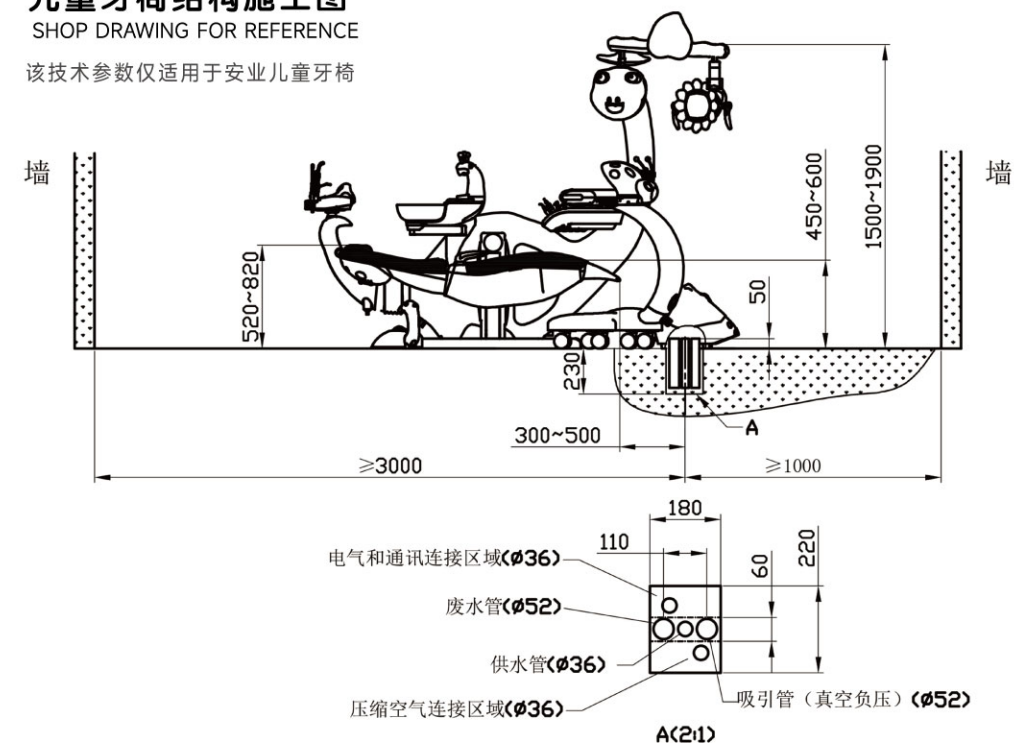


版面有限，以下所列并非所有用户，排名不分先后，最终解释权归安业医疗 器械有限公司所有。

儿童牙椅结构施工图

SHOP DRAWING FOR REFERENCE

该技术参数仅适用于安业儿童牙椅



保养与维护

- ★使用的水源要干净清洁，以免造成牙椅内部管路及阀门堵塞。
- ★空压机要经常排水，时间久了不排水会造成空压机排出的气中有大量的水分，导致牙椅气路老化或堵塞。（一月排一次为宜）
- ★电机长期工作后要润滑保养，可用黄油涂抹伸缩处。（半年一次为宜）
- ★尽量避免病人身上的锋利物品划破椅面。
- ★不要在电源不稳定的情况下使用牙椅，以免损坏牙椅内部电子部件。
- ★夏天天气炎热时可拨开热水器开关；冬天零下低温时，应排出热水器里剩下的储水，避免冻裂热水器。
- ★每天工作完后切记一定要关闭电源和水气开关。

MAINT ENANCE

- ★In order to avoid blocking of the internal tubing and valve for dental unit, you should use the clear water.
- ★You should pay attention to draining sewage. there is moisture in the air, according to the local air humidity ,you should drain dirty water once about one month (when large loadwork ,should be half month).
- ★ Dental chair is still the integration stage between machine and motor ,so you should lubricate the motor when use it about half year.
- ★Trying your best to avoid lacerating the cushion by the key or other edge tool of patient .
- ★Do not use the dental chair in the event of power supply instability, so as not to damage the electronic parts inside of the dental chair.
- ★In summer ,could unplug the water heater in the box (could consult the local distributor); when it is low temperature below zero in winter ,while it is out of work ,please blow inside water to be dry ,otherwise the water heater may freeze to damage under the very low temperature during the night.
- ★For the dental unit ,after a day of work , must be cut off electricity, broken water, broken gas and sanitized.